



# Installation Guides

## Internal Drain Detail

We offer a range of roofing and building solutions to tradesmen, stockists, and directly to consumers. Long term solutions to age old problems. Partnering with some of the biggest names in the industry, we have a long history of quality and excellence.



 [www.permarroof.co.uk](http://www.permarroof.co.uk)

 [sales@permароof.co.uk](mailto:sales@permароof.co.uk)

 01773 608839

# Installation of Internal Drain Detail

## Featuring the EPDM drain outlet accessory



In this Permaroof installation guide, we will demonstrate the installation process for internal drain detail using the EPDM drain outlet accessory.

This method effectively seals and protects internal drain details from water ingress.

Once installed correctly, the EPDM drain detail leaves you with a long-lasting, high performance result, perfect for EPDM flat roofing systems.

You can buy the EPDM drain outlet in the Permaroof online store at: [permaroofstore.co.uk/default/epdm-drain-outlet-100mm.html](https://permaroofstore.co.uk/default/epdm-drain-outlet-100mm.html)

See the full range of EPDM flat roofing accessories at: [permaroofstore.co.uk/default/accessories.html](https://permaroofstore.co.uk/default/accessories.html)

## Installation guide for EPDM internal drain detail

### Step One

The EPDM membrane should be fully adhered to the substrate and the membrane cut away to reveal the drain hole.



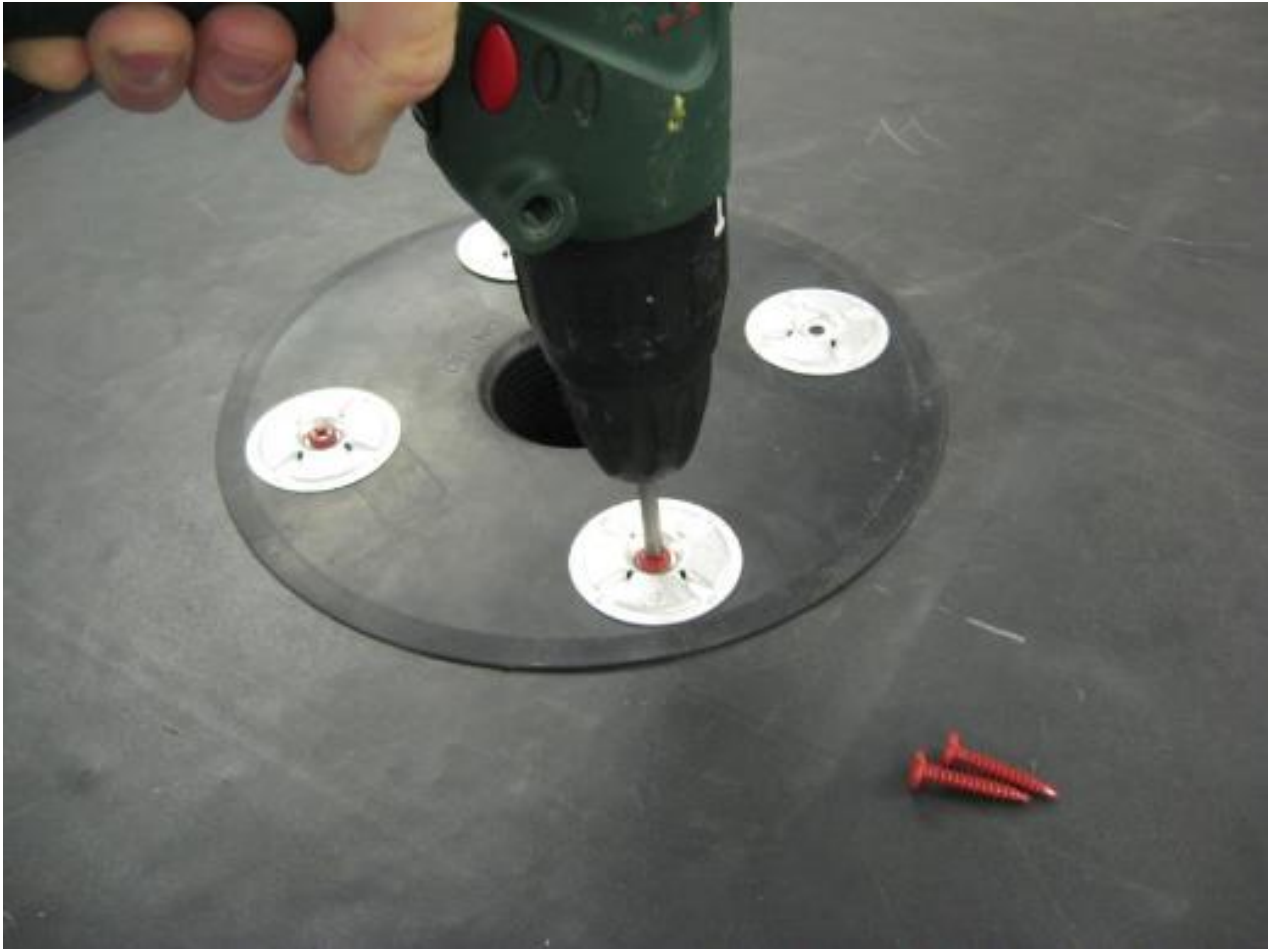
## Step Two

Insert the drain outlet...



## Step Three

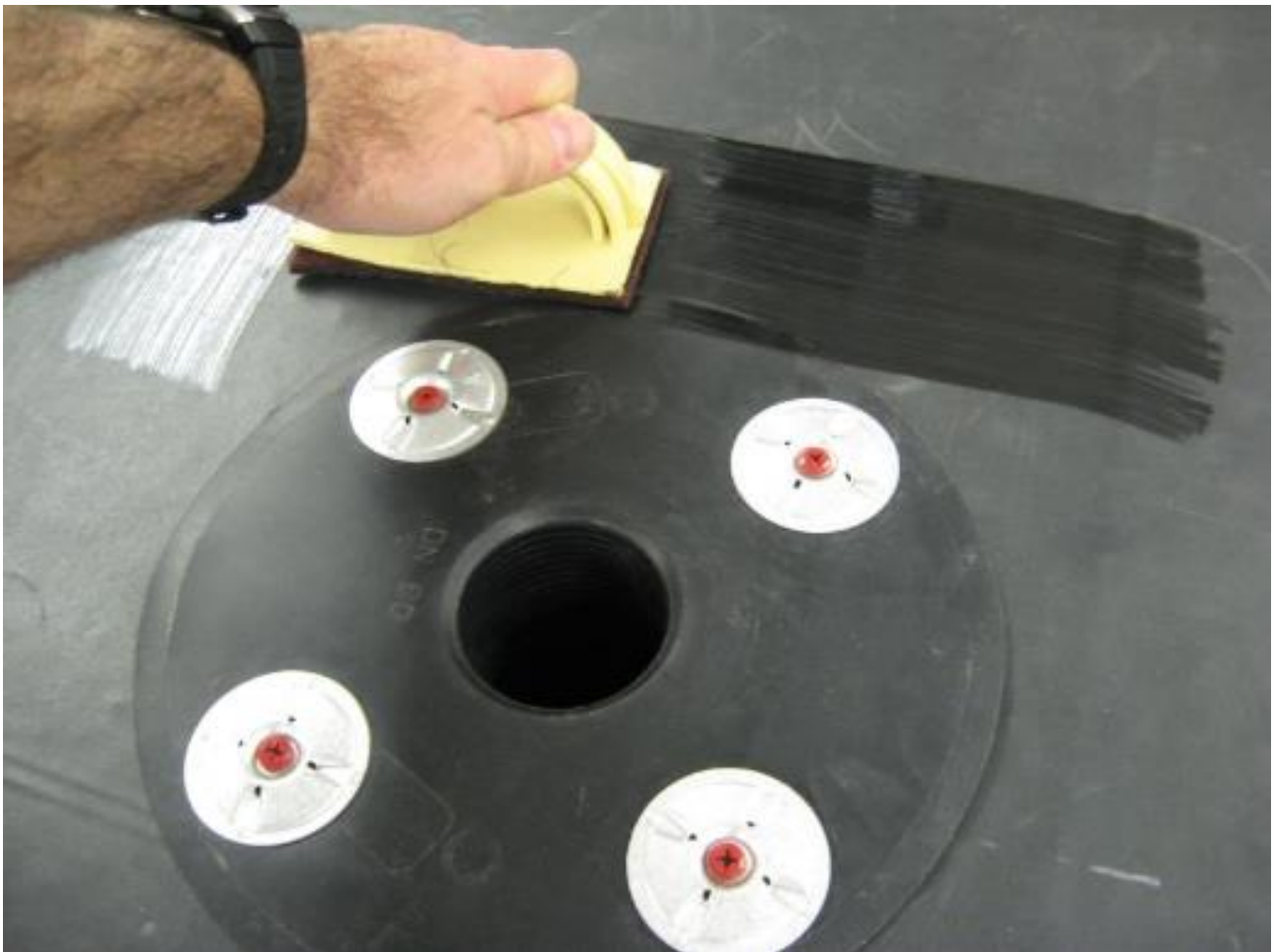
Mechanically fix the outlet to the roof deck using V-plates and All-purpose fasteners.





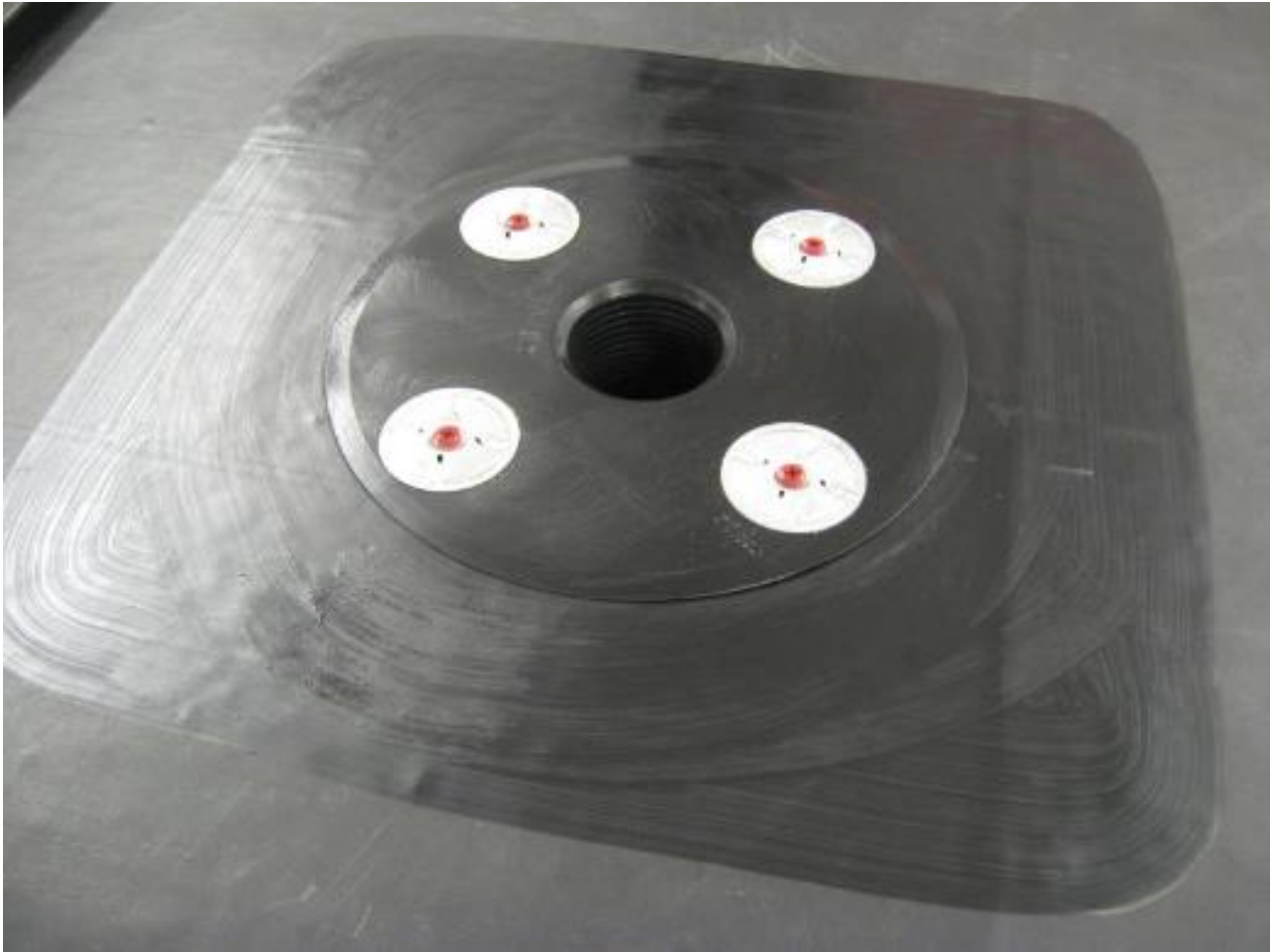
## Step Four

Apply Quickprime plus to the area a minimum of 100mm beyond the perimeter of the flange.



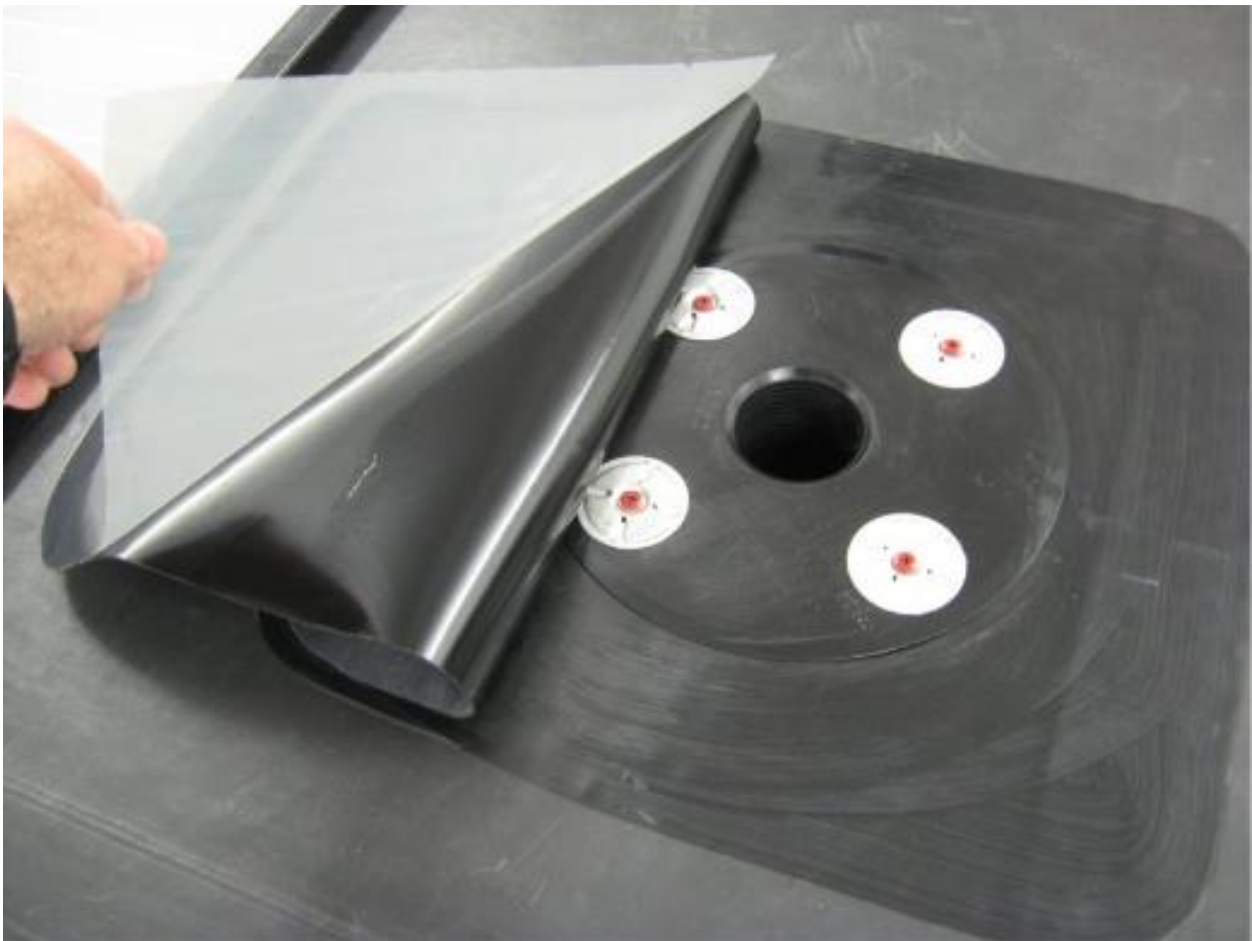
## Step Five

Wait for the Quickprime plus to become tacky.



## Step Six

Prepare a piece of SA flashing a minimum of 75mm larger than the drain outlet diameter and apply to the primed area, ensuring that Quickprime Plus is visible all around the SA flashing.





## Step Seven

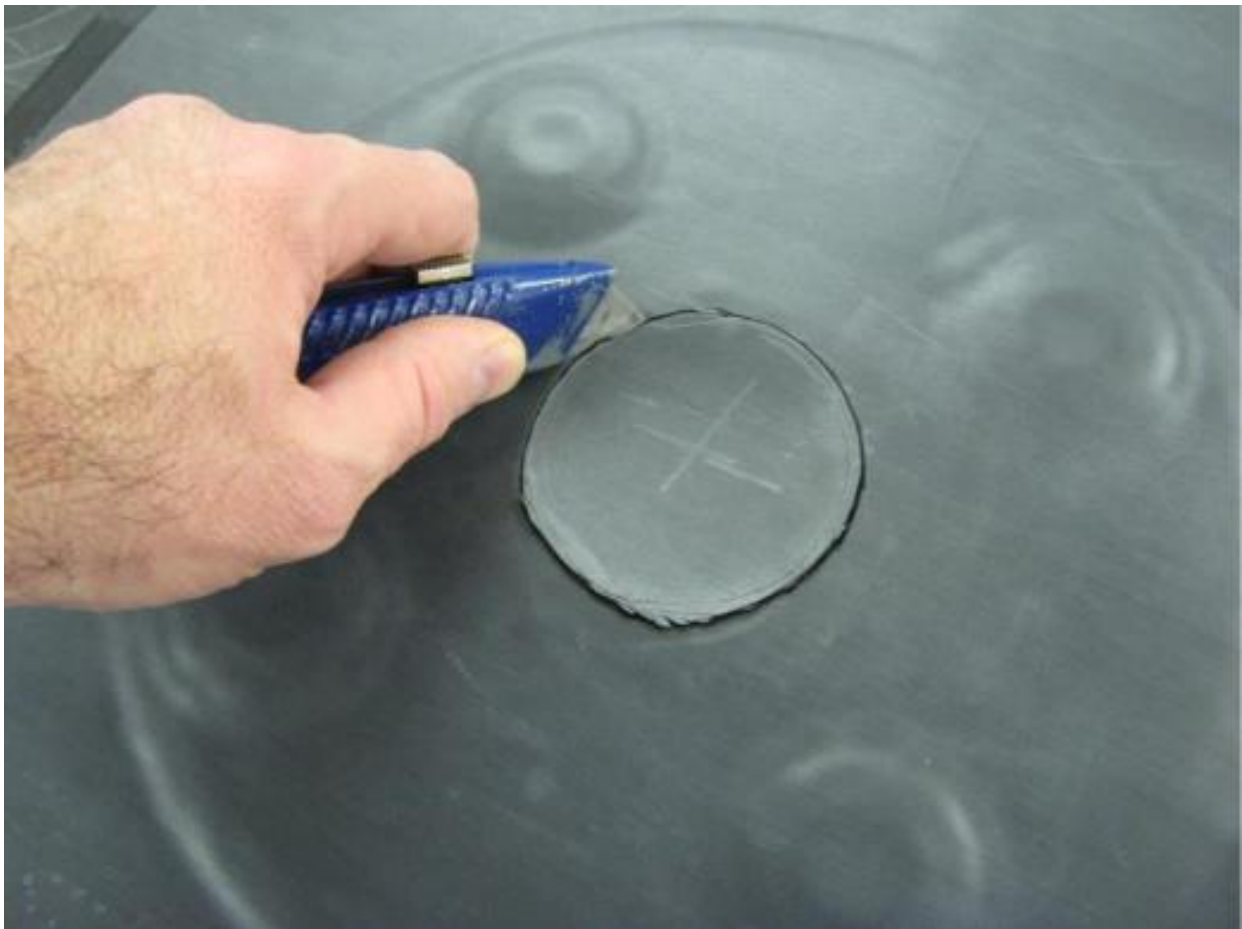
Apply the silicone roller for total adhesion across the entire installation area.



## Step Eight

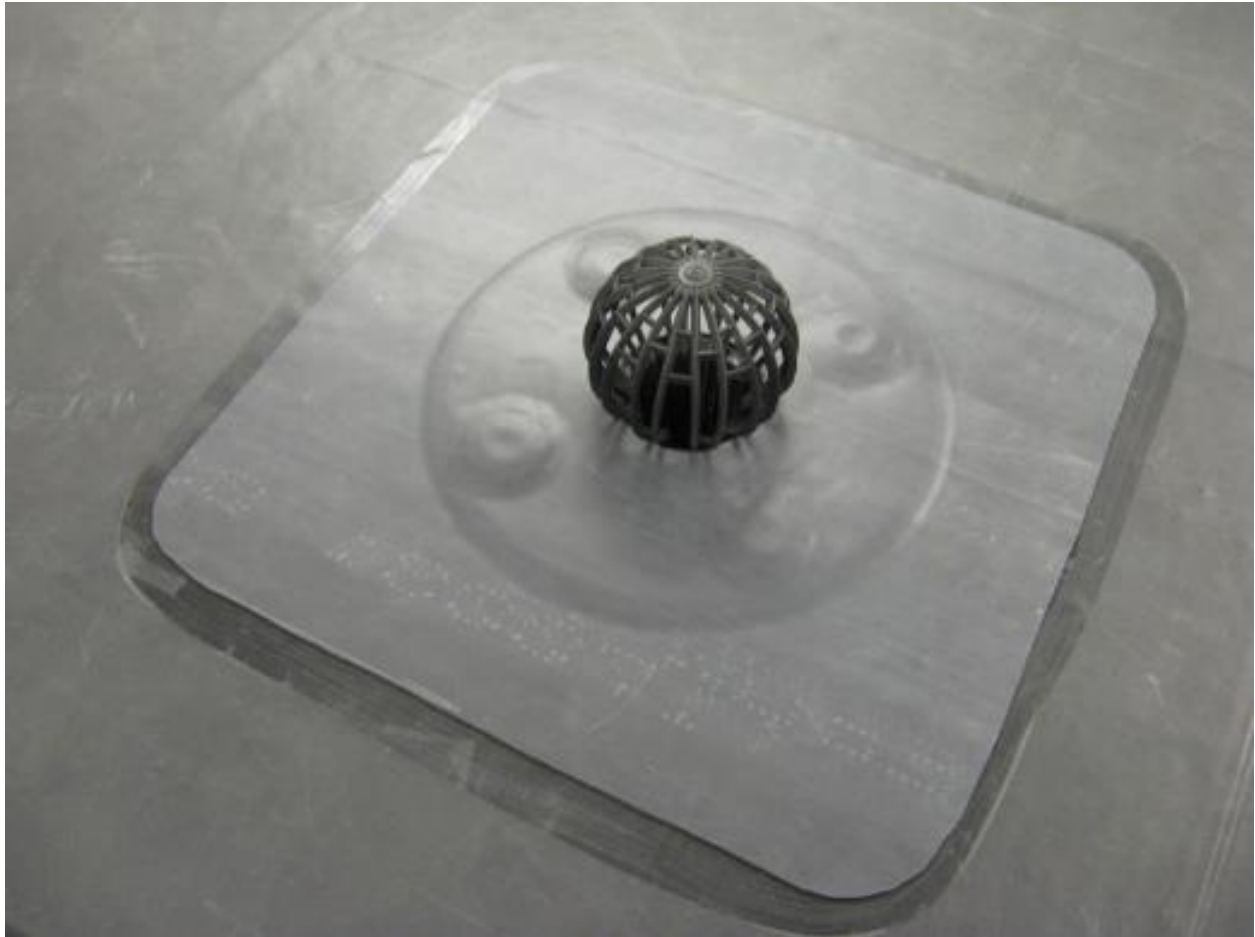
Remove the SA flashing part that covers the outlet by cutting a hole around its diameter.

Take care not to cut into the drain outlet itself.



## Step Nine

The finished detail with leaf guard inserted.



## Permaroof UK Ltd

01773 608 839

[permaroof.co.uk](http://permaroof.co.uk)

## Shop online

[permaroofstore.co.uk](http://permaroofstore.co.uk)

## EPDM roofing training:

[permaroof.co.uk/roofing-training-courses](http://permaroof.co.uk/roofing-training-courses)

## Further EPDM resources:

[permaroof.co.uk/diy-flat-roof-library](http://permaroof.co.uk/diy-flat-roof-library)

## Visit our YouTube channel for tutorials:

[youtube.com/user/PermaroofOnline/videos](https://youtube.com/user/PermaroofOnline/videos)