



Installation Guides

Emergency Flat Roof Repair with Permaroof Liquid PU

We offer a range of roofing and building solutions to tradesmen, stockists, and directly to consumers. Long term solutions to age old problems. Partnering with some of the biggest names in the industry, we have a long history of quality and excellence.



 www.permarroof.co.uk

 sales@permarrroof.co.uk

 01773 608839

Permaroof How-to Guides

Emergency Flat Roof Repair with P500 Liquid PU



In this guide, we will show you how to carry out an emergency flat roof repair using the latest liquid PU waterproofing system from Permaroof - Emergency Roof Repair.

Fast and easy to apply, the P500 Emergency Roof Repair product is ideal to quickly address any damage before your roofing begins to leak. Fast-curing and suitable for a wide range of surfaces, the product is a must-have for old domestic flat roofs.

Buy P500 Emergency Roof Repair at:

permaroofstore.co.uk/permaroof-emergency-roof-repair

Emergency Flat Roof Repair with Liquid PU

Step One

Remove the lid from the Permaroof Emergency Roof Repair product and mix thoroughly for several minutes, or until the product is fully blended.



Fig 1 - Thoroughly mixing the Permaroof Emergency Roof Repair product.

Step Two

Prepare the damaged area by ensuring that any cracks are clear of dirt and debris.

If necessary, scrape out any cracks using a suitable tool, taking care not to cause further damage to the roof deck below, but to ensure the area is completely cleared.

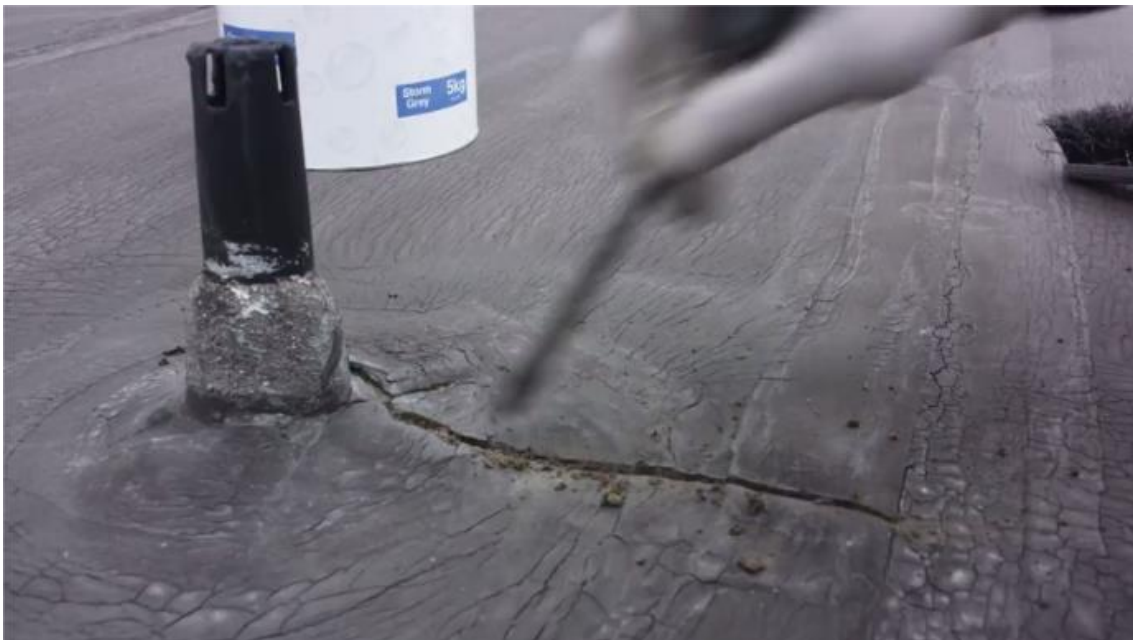


Fig 2 - Clearing the cracks of dirt and debris.

Step Three

Brush away the loose surface dirt and debris, making sure that the area to be treated is completely clear.

Once the surface is completely clear of debris and dust, you are now ready to apply the Permaroof Emergency Roof Repair.



Fig 3 - Brushing away loose debris to complete preparation of the area.

Step Four

Using a suitable brush, generously apply the Emergency Roof Repair product to the affected area. Use the brush to work the product deep into any cracks, taking care not to create air pockets.



Figs 5 & 6 - Working the Emergency Roof Repair into the damaged area of the flat roof.



Step Five

Apply the product around any extrusions in the damaged area to ensure a completely watertight seal.



Fig 7 - Applying the product around a pipe extrusion.

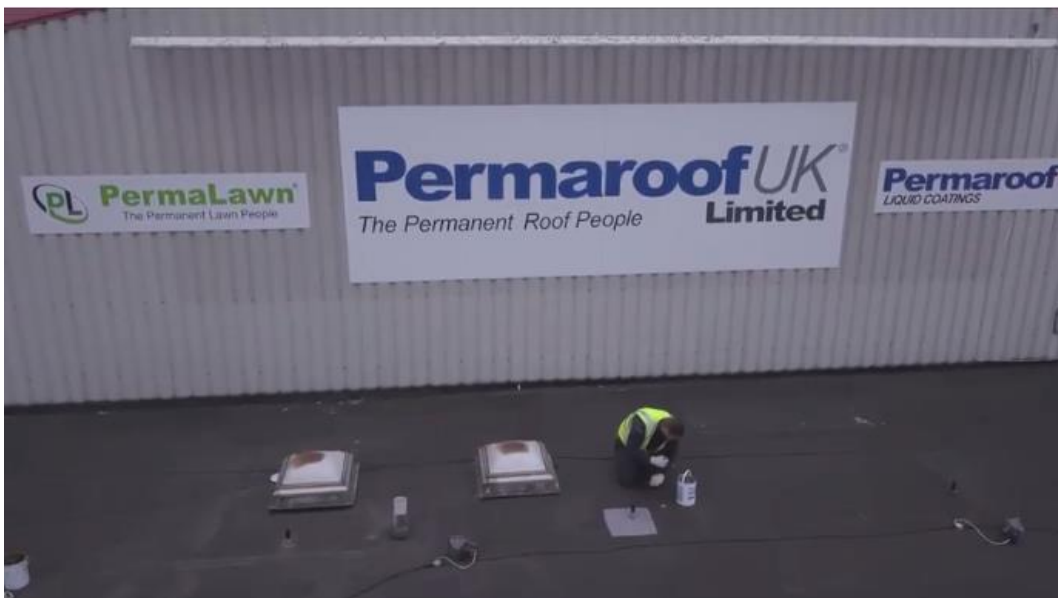


Fig 8 - Viewing the work area from above.

Step Six

Replace the lid on the tin of Emergency Roof Repair product and secure down tightly.



Fig 9 - Replacing the lid tightly.

And you're done!

You can view the full video demonstration in the
Permaroof video library at:

permaroof.co.uk/video/roofing-emergency-repair

Permaroof UK Ltd

01773 608 839

permaroof.co.uk

Shop online

permaroofstore.co.uk

EPDM roofing training:

permaroof.co.uk/roofing-training-courses

Further EPDM resources:

permaroof.co.uk/diy-flat-roof-library

Visit our YouTube channel for tutorials:

youtube.com/user/PermaroofOnline/videos