



Installation Guides

How to Fit an External Corner Using Quickseam Formflash

We offer a range of roofing and building solutions to tradesmen, stockists, and directly to consumers. Long term solutions to age old problems. Partnering with some of the biggest names in the industry, we have a long history of quality and excellence.



 www.permarroof.co.uk

 sales@permarmarroof.co.uk

 01773 608839

EPDM Installation Guides



How to Fit an External Corner with Quickseam Formflash

In this installation guide, we will demonstrate how to handle an EPDM external corner detail using Quickseam Formflash.

PermaRoof UK how-to guides offer trade and DIY roofers a step-by-step approach to installing your EPDM membranes and accessories. Our demonstrators are qualified EPDM installers and run our [flat roofing training courses](#) at the PermaRoof headquarters in Derby. In addition, we have an extensive range of video tutorials available in our [video library](#). We offer industry-leading support for all your projects, large or small.

Talk to the PermaRoof UK team today on:

01773 608 839

EPDM external corner using Quickseam Formflash



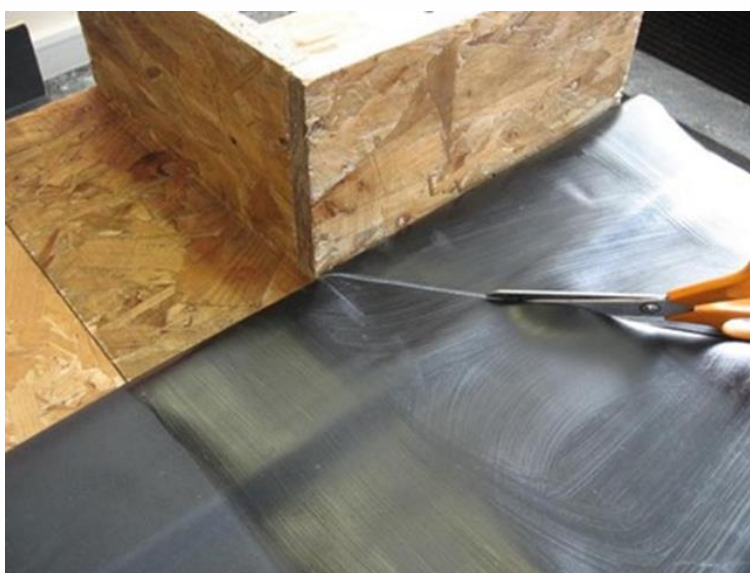
Step 1: Offer the membrane up to the base of the upstand and fold back enough material to get the 4" roller in and apply the contact adhesive onto the deck, the upstand, and also on the back of the membrane. **Note:** Firestone Bonding Adhesive (contact adhesive) is now dark green in colour.



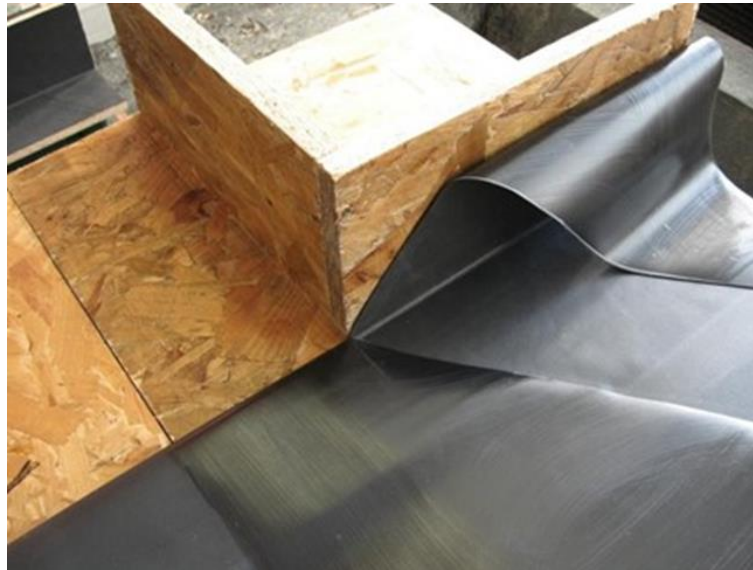
Step 2: Once the contact adhesive becomes tacky, roll the membrane towards the base of the upstand, pushing right into the angle change to eliminate any tenting.



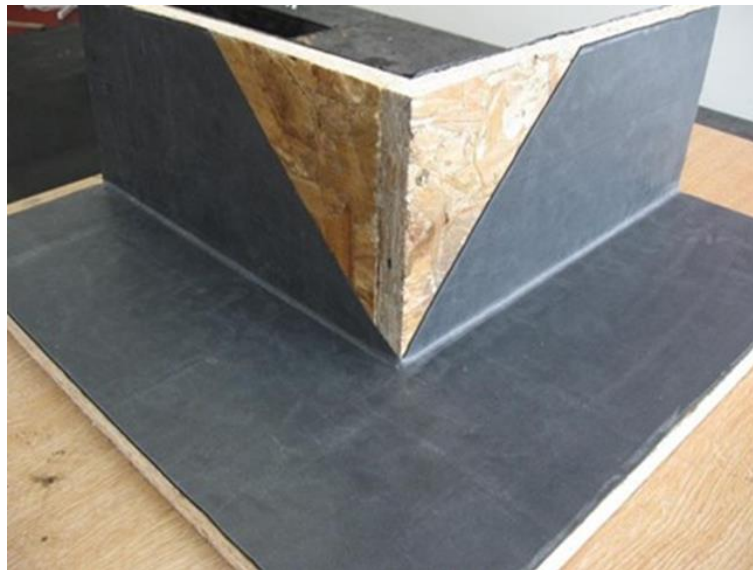
Step 3: Mark a line with the crayon, at 45° from the corner. This will create the resulting “V- shape” on the upstand.



Step 4: Cut down the marked line until you reach the upstand corner. Also cut away any excess membrane, to make handling the material easier.



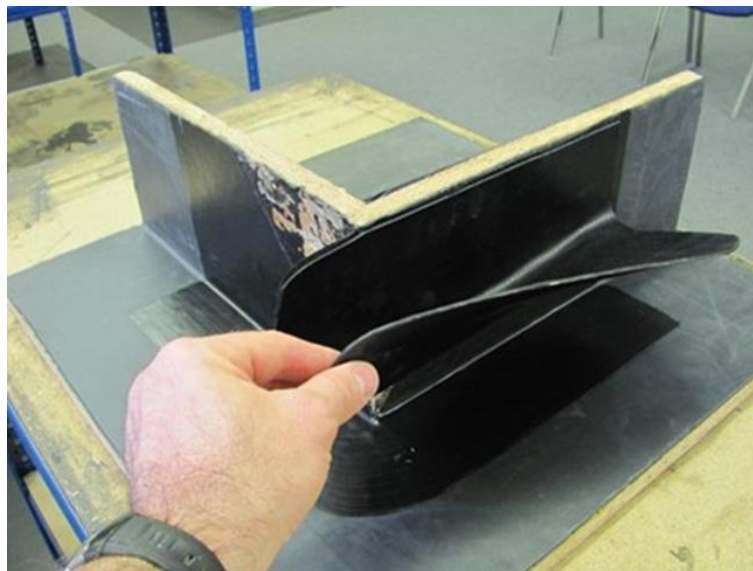
Step 5: Offer the membrane to the upstand...



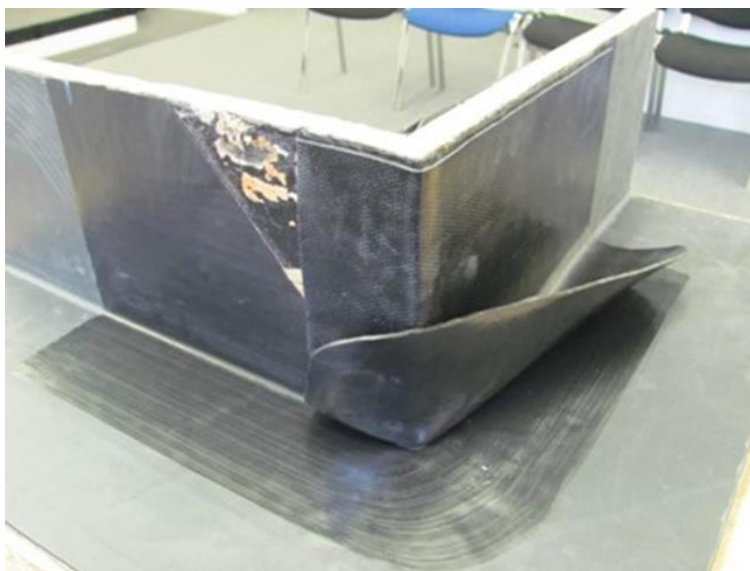
Step 6: The rest of the membrane can now be applied onto the roof deck around the corner, and then adhered to the upstand using the same procedure. The corner is to be waterproofed with 2 pieces of Quickseam Formflash, each with a minimum 75mm onto the deck.



Step 7: As with any of the Quickseam tapes, Quickprime Plus needs to be applied to the area the tape is to be mated with. Also ensure the area is clean and dry without any dust or debris.



Step 8: Once the Quickprime Plus is tacky, apply the Quickseam Formflash starting from the top of the upstand working it down towards the base taking care not to let it touch the base just yet.



Step 9: Apply the Quickseam Formflash around the corner by 75mm and attach.



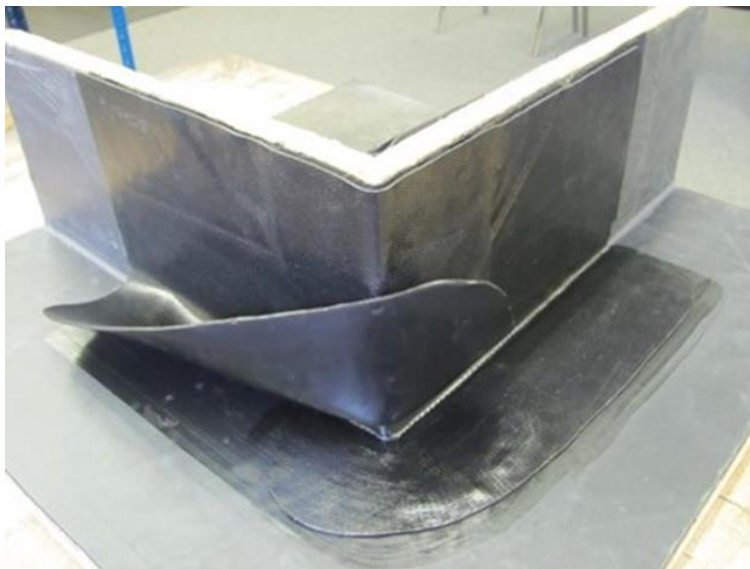
Step 10: The Quickseam Formflash can now be mated to the deck area.



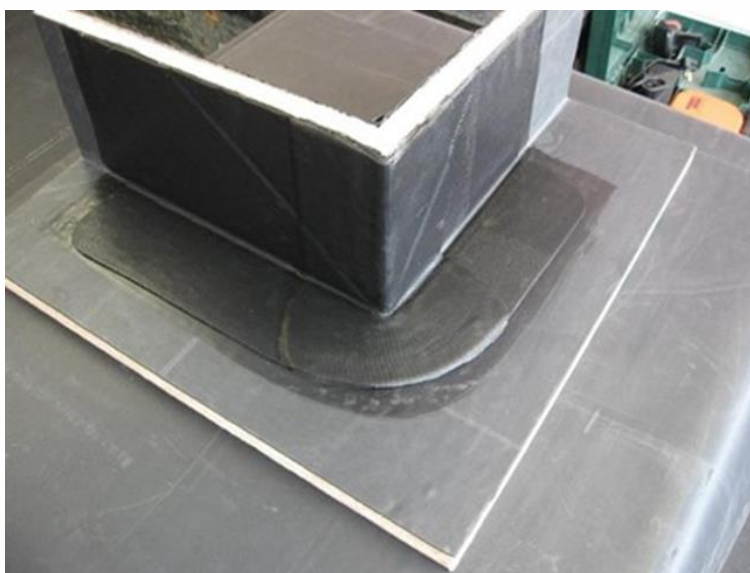
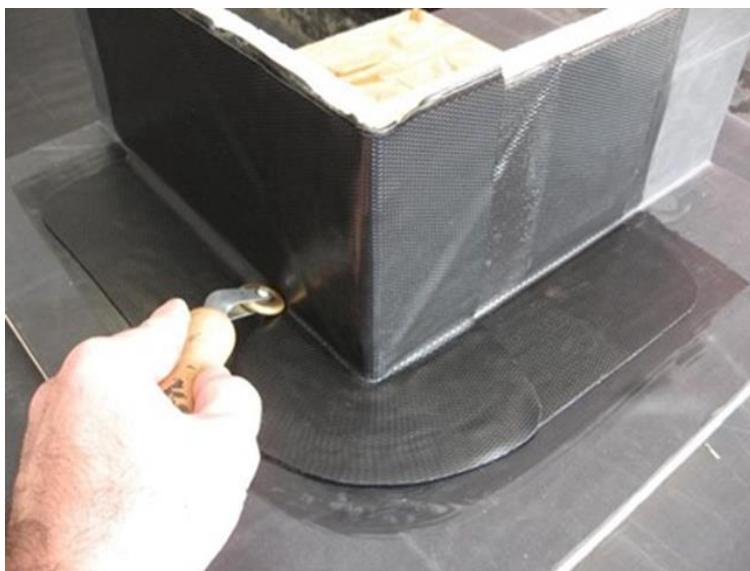
Step 11: Using the penny roller, work the Quickseam Formflash right into the angle change, starting from the corner itself. This method will help prevent any unsightly air bubbles from becoming trapped.



Step 12: Repeat the procedure with the 2nd piece of Quickseam Formflash to complete the corner, but remember to apply Quickprime Plus to where the 2nd piece is to be applied.



Step 13: Repeat the procedure to complete the seal using the penny roller, paying attention to the edges and pressing down firmly with even pressure.



The finished detail.

PermaRoofUK

01773 608 839

permaroof.co.uk

Shop online

permaroofstore.co.uk

EPDM roofing training:

permaroof.co.uk/roofing-training-courses

Further EPDM resources:

permaroof.co.uk/diy-flat-roof-library

Visit our YouTube channel for tutorials:

youtube.com/user/PermaroofOnline/videos

PermaRoofUK is a part of PermaGroup, dedicated to providing permanent solutions to age-old problems and bringing together some of the most innovative roofing and construction systems on the market.

